

Serco Aluminum Sectional Doors

SA3552, SA3502



Serco SA3552 with lowered panels



Serco SA3552 and SA3502 aluminum sectional doors are constructed of 2" thick extruded aluminum rails and stiles and can be fitted with a variety of full-view glass options, solid aluminum, perforated or louvered ventilation panels. Perfect for automotive showrooms and repair centers, service stations, car washes, fire houses, restaurants, and sports complexes; our aluminum doors create a clean style for any facility. These doors can be mounted stationary or operative as a stylish alternative for all fresco situations. The robust aluminum strut system provides added strength and durability to larger Serco SA3552 door sizes up to 24' 2", without restricting the viewing area.



Serco SA3502

CONSTRUCTION

Serco SA3552

Heavy-duty aluminum door

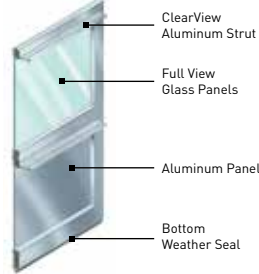
- 2" thick extruded aluminum rails & stiles
- Available in 1" width increments

Serco SA3502

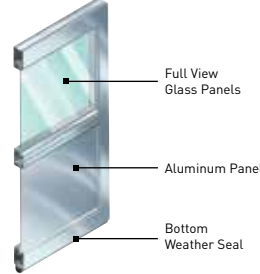
Medium-duty aluminum door

- 2" thick extruded aluminum rails & stiles
- Available in 1" width increments

Serco SA3552



Serco SA3502



Track: All doors are available with both 2" or 3" track in Standard Lift, High Lift, Vertical Lift, Low Headroom, and Follow the Roof Pitch. Custom track configurations are also available. For drawings and more information, please visit www.sercoentrematic.com.

Springs: Torsion springs are oil tempered, helical wound and custom computed for each door for a minimum 10,000 cycle life. Optional springs are available up to 100,000 cycle life.

Hardware: Hardware includes minimum 14-gauge galvanized steel hinges and 13-gauge galvanized steel track brackets. All rollers have minimum 10-ball bearings.

SPECIFICATIONS

	Heavy-duty	Medium-duty
	Serco SA3552	Serco SA3502
MATERIAL	Aluminum	Aluminum
CONSTRUCTION LAYERS	Single	Single
PANEL OPTIONS		
Full View	•	•
Perforated	•	
Louvered Ventilation	Fall 2015	
Aluminum	•	•
Insulated Aluminum	•	
INSULATION¹	Polystyrene	NA
R-VALUE²	2.53	NA
DOOR THICKNESS	2" (5.1cm)	2" (5.1cm)
MINIMUM WIDTH	2'	2'
MAXIMUM WIDTH	24' 2"	12' 2"
MINIMUM HEIGHT	6'	6'
MAXIMUM HEIGHT	20' 1"	12' 1"
WIND LOAD³ AVAILABLE	•	•
FINISH WARRANTY⁴	5 Years	5 Years
WORKMANSHIP/HARDWARE WARRANTY⁴	1 Year	1 Year

¹ Insulation has passed self-ignition, flamespread and smoke developed index fire testing.

² Calculated door section R-value is in accordance with DASMA TDS-163.

³ It is your responsibility to make sure your garage door meets local building codes.

⁴ For complete warranty details, visit sercoentrematic.com or contact your local Serco dealer.

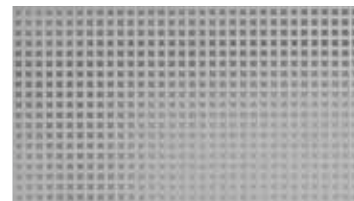
PANEL OPTIONS



ALUMINUM FULL VIEW

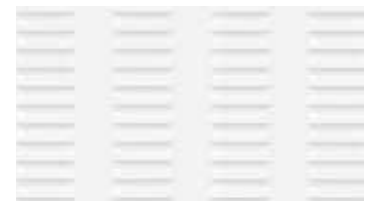


ALUMINUM & INSULATED ALUMINUM



PERFORATED ALUMINUM*
0.312" square perforations on 1/2" centers

*Mill finish only. Custom powder coat available Summer 2015



LOUVERED ALUMINUM
7 columns of [12] 3" x 3/4" vents on a 4' x 24" panel

COLORS

Actual color may vary from sample shown.
Custom Powder Coat options available for Serco SA3552 only.



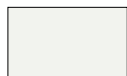
CLEAR ANODIZED



ANODIZED DARK BRONZE*



ANODIZED BLACK*



WHITE POWDER COAT*

*SA3552 only.

GLAZING OPTIONS

	Serco SA3552	Serco SA3502
DSB GLASS		
Single or Insulated	•	Single Only
TEMPERED GLASS		
Single or Insulated	•	Single Only
OBSCURE GLASS		
Single or Insulated	•	Single Only
THERMAPRO LOW-E GLASS	•	Single Only
POLYCARBONATE GLAZED	•	n/a
ACRYLIC GLAZED	•	•
CUSTOM OPTIONS	•	•

ENTRE/MATIC

Entrematic
165 Carriage Court
Winston-Salem, NC 27105
800.933.4834
www.sercoentrematic.com



Entrematic reserves the right to change specifications and designs without notice and without incurring obligations. Entrematic products may be the subject of one or more U.S. and/or foreign, issued and/or pending, design and/or utility patents. Serco as word and logo are registered trademarks belonging to Entrematic Group AB or other companies controlled by the same organization. All rights reserved.

©Entrematic Group AB 2015. All rights reserved. Printed in USA Form # SSS-ALSD-1015