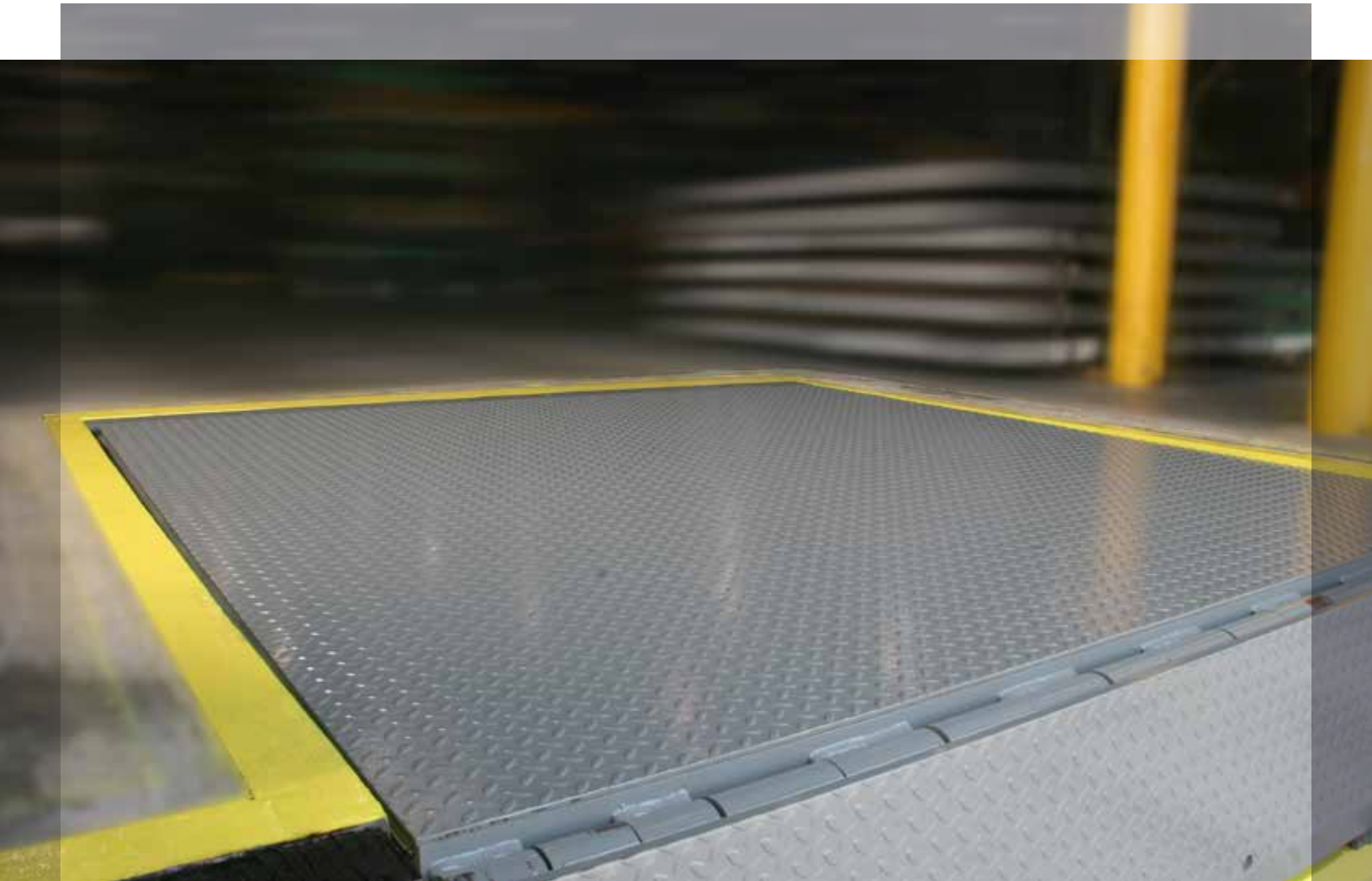


Serco Mechanical Dock Levelers



Serco mechanical dock levelers incorporate premium features such as a single point adjustment extension spring counterbalance, unlimited float hold-down, and an integral maintenance strut & lip support latch, thereby setting the industry standard for dependability and ease of operation.

THE W SERIES MECHANICAL DOCK LEVELER

Your loading dock crew works hard, but that doesn't mean a mechanical dock leveler has to be labor intensive. Serco W Series mechanical dock levelers have set the industry standard for mechanical leveler durability, dependability and ease of operation. With the W Series mechanical dock leveler, you'll get standard Serco features like a CLEAN FRAME® design for easy removal of trash and debris in the leveler pit and SafeTFrame® design for structural support, plus premium features including a single point adjustment extension spring counterbalance, the POSI-TRAC unlimited float hold-down and the exclusive HYDRA CAM lip control to decrease walk-down force and improve lip extension. The total result is a dock leveler that's easier to operate and provides an overall lower lifetime cost of ownership than conventional mechanical dock levelers.





PRODUCT DETAILS

1. Integral deck maintenance strut with lock-out capability
2. Working range toe guards (Full-range optional)
3. High tensile steel lip and deck
4. Structural steel safety legs stop leveler platform at dock level
5. Posi-Trac hold-down provides unlimited float through leveler working range
6. Unique oil-tempered chromium silicone steel extension spring counterbalance with single point adjustment for easy routine maintenance. Spring position above pit floor provides greater reliability than floor mounted springs.
7. Exclusive SafeTFrame™ provides superior structural support and level interface with warehouse floor
8. CLEAN FRAME® pit design allows unobstructed access for easy clean up of spills, trash removal and routine maintenance.
9. Integral lip support latch
10. Lip keepsers secure leveler when overhead door is down
11. Exclusive HYDRA CAM™ extends and holds the lip at the top of its cycle. The lip remains yieldable throughout the loading operation

STANDARD FEATURES

- Single Adjustment Point Extension Spring Counterbalance
- Posi-Trac® Unlimited Float Hold-down
- HYDRA-CAM™ Automatic Lip Extension
- High Tensile Steel Lip, Deck & Beams
- Clean Frame® Design
- Structural Steel Safety Legs
- Exclusive SafeTFrame™ Design (Rear Frame Only)
- Working Range Toe Guards
- Below-dock Endloading Capability
- 16" Lip Standard. 18" or 20" Lip Optional
- Grease Fittings
- Integral Maintenance Strut & Lip Support Latch
- Heavy-duty B410-14F Dock Bumpers
- Reduced Lip Crown / Extended Lip Chamfer Standard



WL MODELS 30-35K CAPACITY DOCK LEVELER
Designed with strength and dependability in mind.
The lip mechanism allows the operator to deploy the leveler in a safe controlled manner.



WS MODELS 40-45K CAPACITY DOCK LEVELER
Unique high tensile steel split box beam frame design provides very tight beam spacing.

A SAFER, STRONGER DOCK LEVELER



For decades all dock levelers installed in a concrete pit have required an installer to place and weld steel shim under the rear frame in order to level the device and provide long-term support. This conventional process can lead to install errors as installers are often working under the dock leveler in a cramped environment and may not use the correct size shim and/or weld the shim properly. The result... the dock leveler can suffer structural fatigue which may lead to expensive repair or replacement.



DESIGN ADVANTAGES

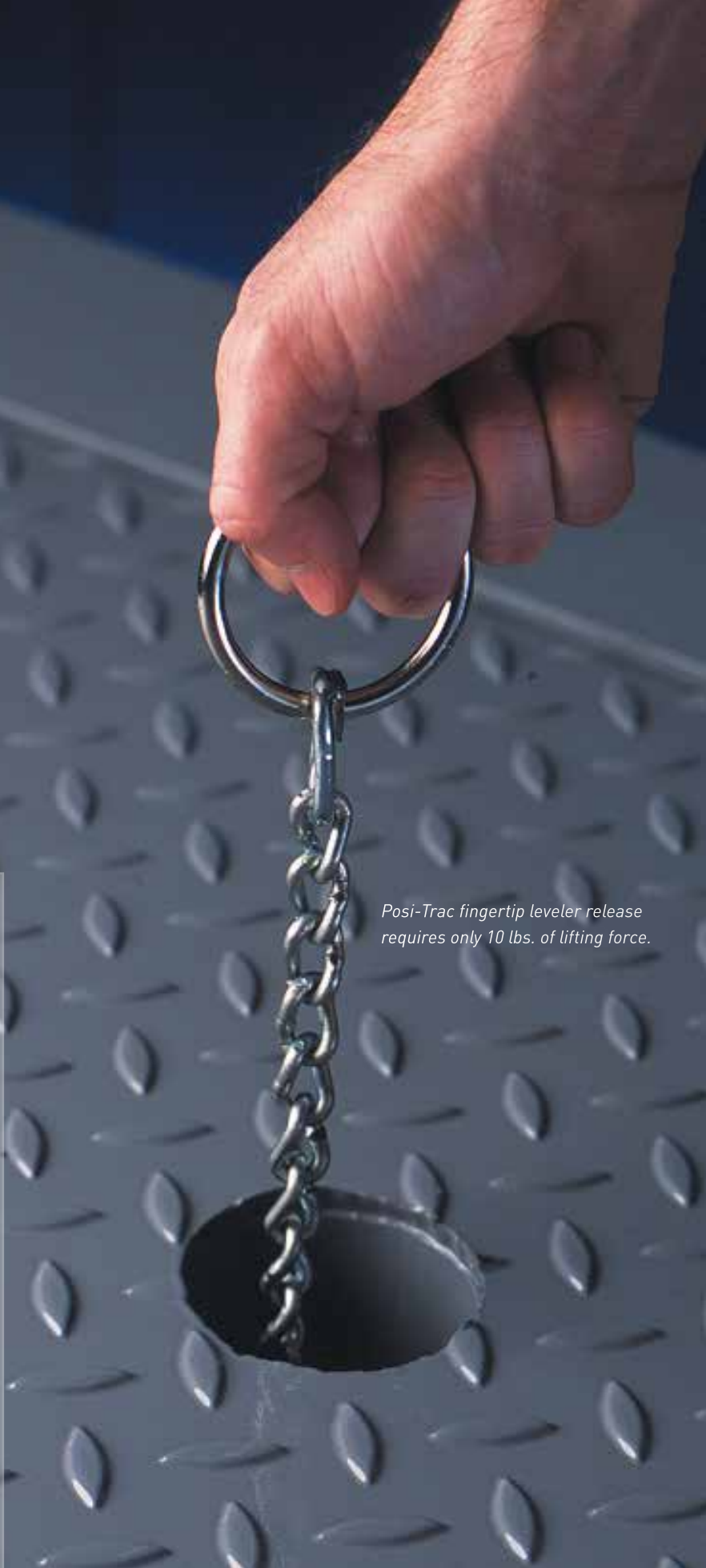
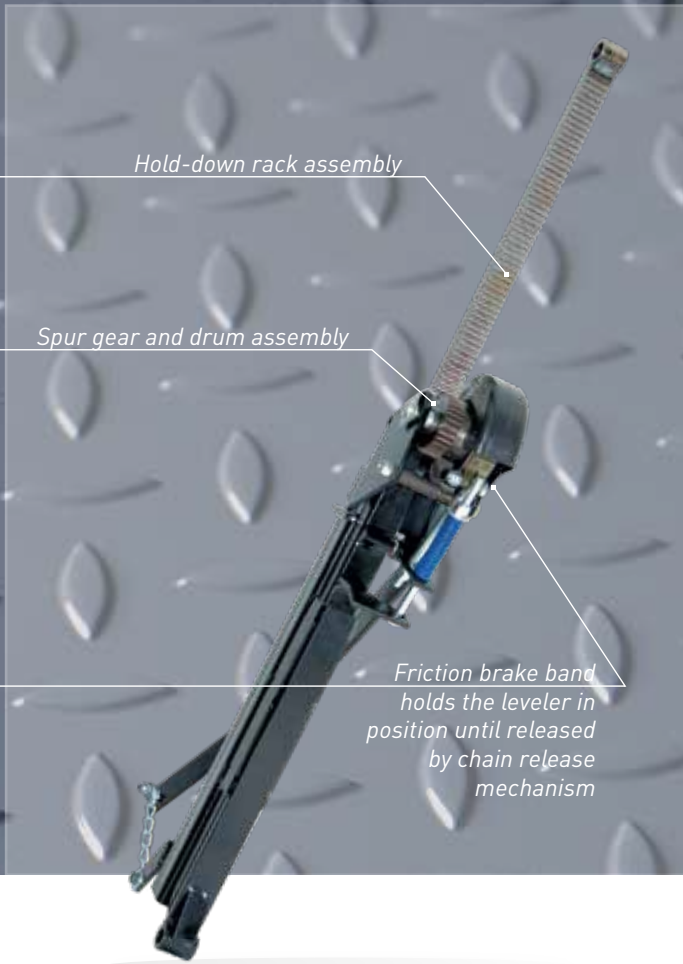
- Greater structural strength & durability
- Eliminates installation issues common with conventional dock levelers
- Ensures level transition from warehouse floor to dock leveler
- Eliminates premature structural fatigue due to improperly shimmed/installed dock leveler

POSI-TRAC® HOLD-DOWN: SMOOTH, FINGERTIP OPERATION

Throughout loading operations, trailers move up and down, increasing wear on conventional ratchet/ pawl hold-down devices. With the increased use of air-ride suspension trailers, restoring the dock leveler off the back of the trailer becomes even more difficult. Time and energy are wasted and replacement parts increase operational costs. That is why Serco developed Posi-Trac.

The patented Serco Posi-Trac hold-down offers an extended float range throughout the leveler's working range and provides easy fingertip release. This is accomplished with an exclusive brake band and a 32-tooth spur gear assembly that replaces maintenance-intensive conventional hold-downs. Posi-Trac eliminates "bouncing" from float spring fatigue. The lip maintains level contact with the truck bed, even with air-ride suspension trailers. In below-dock operations, the Posi-Trac's hold-down compensates to counteract the main spring counter-balance of the leveler.

Serco's unique design is easy to operate, produces less wear on components, is more dependable than ordinary float spring units and provides an overall lower lifetime cost of ownership than conventional mechanical dock levelers.

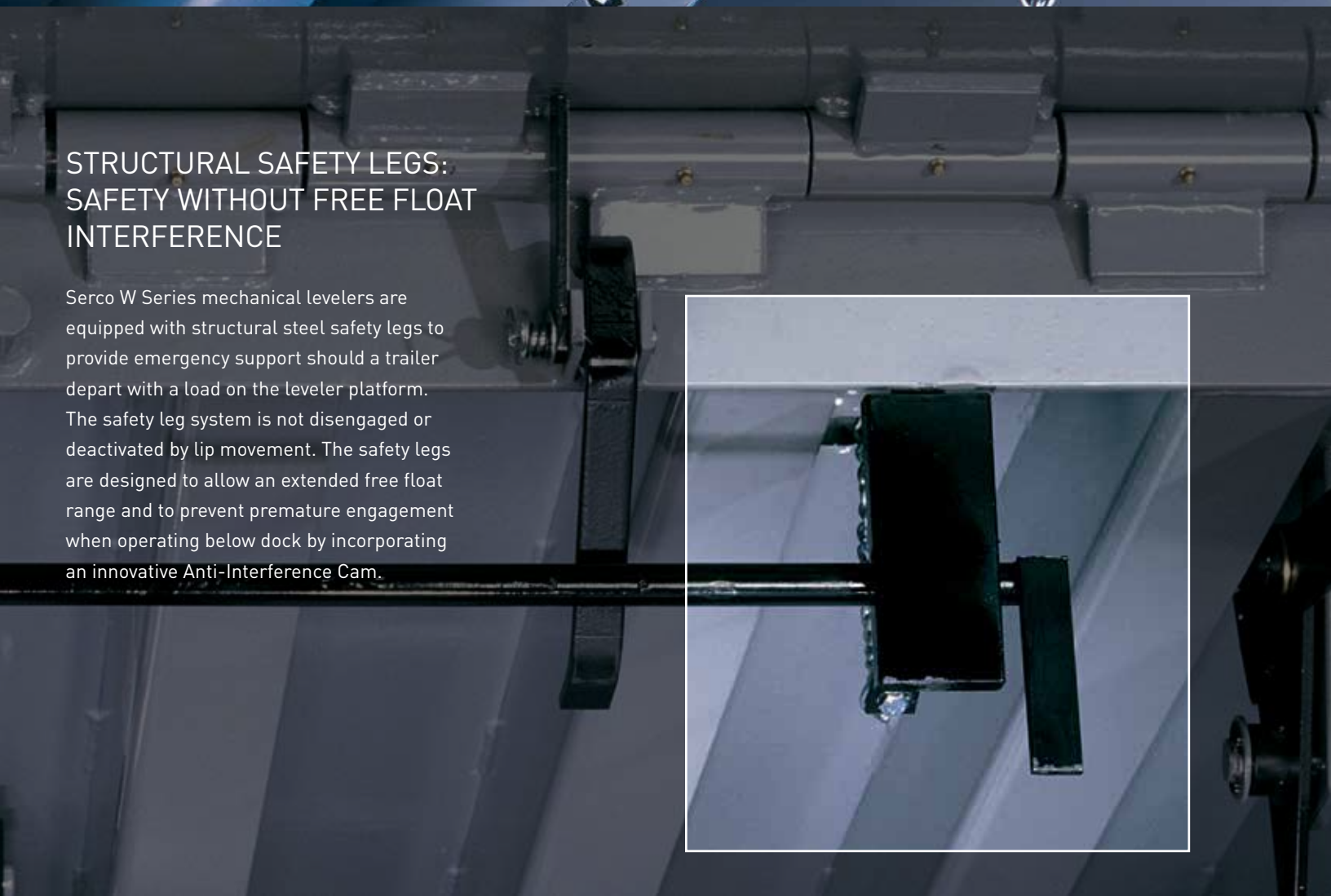




HYDRA CAM™ LIP CONTROL: LITE-STEP WALKDOWN FOR EASY POSITIONING

Serco's patented HYDRA CAM™ lip control is designed to decrease walk-down force on levelers including heavy capacity levelers and levelers with larger lips.

The HYDRA CAM lip control counterbalance mechanism improves lip extension. When the hold-down is released, the dock leveler raises and the lip is extended gently, without the violent action of other lip mechanisms. With Serco's HYDRA CAM, the lip remains extended until the operator starts to walk the leveler down. A hydraulic shock absorbing cylinder controls the rate of lip fall as the leveler is walked down to the truck. The lip is yieldable throughout the entire working range.



STRUCTURAL SAFETY LEGS: SAFETY WITHOUT FREE FLOAT INTERFERENCE

Serco W Series mechanical levelers are equipped with structural steel safety legs to provide emergency support should a trailer depart with a load on the leveler platform. The safety leg system is not disengaged or deactivated by lip movement. The safety legs are designed to allow an extended free float range and to prevent premature engagement when operating below dock by incorporating an innovative Anti-Interference Cam.



SMART DESIGN ADVANTAGES

- Easy positioning with HYDRA CAM lip control, designed to decrease walk-down force on levelers
- Structural steel safety legs offer emergency support without free float interference
- Patented POSI-TRAC features smooth, fingertip operation to save time and energy
- Exclusive SafeTFrame® design provides first-rate structural support
- CLEAN FRAME® design makes cleanup and maintenance easy
- Unique spring counterbalance includes a single point adjustment for added durability
- Integral maintenance strut with lockout capability to support the deck during cleaning and routine maintenance

GOOD FOR



INDUSTRIAL
OPERATIONS



DISTRIBUTION
OPERATIONS



GENERAL
WAREHOUSE



INTEGRATE YOUR EQUIPMENT FOR IMPROVED SAFETY AND EFFICIENCY.

When combined with Serco vehicle restraints, mechanical dock levelers and other dock devices provide a safer operation.



RESTRAINTS



TURBO FANS



LED DOCK LIGHT



RESTRAINTS



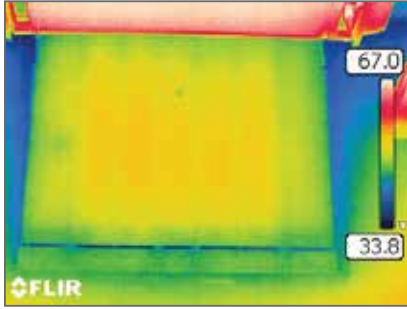
DOCK SEALS



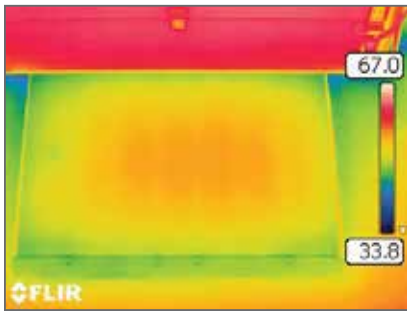
DOCK DOORS

GUARD AGAINST ENERGY LOSS

Energy Guard® prevents energy loss by providing a superior perimeter seal along the sides and rear of the leveler and blocks dirt, debris & insects from infiltrating the loading dock. The innovative design closes off the gaps between the dock leveler and concrete pit walls, preventing the mass flow of air into and out of the facility and minimizing energy loss. Energy Guard is a factory installed option available on all dock levelers.



BEFORE: Hot or cold air can easily transfer through perimeter gaps.



AFTER: ENERGY GUARD effectively seals off the perimeter gaps.

DESIGN ADVANTAGES

- Seal assemblies rotate rather than scrape the pit wall to reduce wear and increase effective life
- Expanded sealing range creates an effective perimeter seal up to 9" above dock level
- Rear hinge seal assembly's durable 2-ply material flexes during operation to block air flow at the rear
- Design leaves access to the pit clear for cleaning and dock leveler inspections
- Factory Installed – No field installation or pit mounted hardware
- Design avoids risk of fabric being cut, torn or damaged by trailers or debris resulting in expensive replacement
- Unrestricted access to pit for cleaning and dock leveler inspection. No curtains or fabric blocking access to the dock leveler and pit



DON'T JUST OBSERVE IT, LIVE THE EXPERIENCE.

Serco® leads the industry in specialty dock levelers, safety products and programmable control systems, offering a comprehensive portfolio of loading dock and warehouse solutions. We are delighted to invite you to our 6,000 square foot showroom, known as the Entrematic Academy in Carrollton, Texas. The Entrematic Academy gives you a very special opportunity to get to know our products in person. Gain hands on experience and enjoy one-on-one interaction with our engineering and manufacturing team in this state-of-the-art facility.



CAN'T MAKE THE TRIP TO DALLAS?

Let our Mobile Academy come to you. Our 53' completely enclosed and temperature-controlled trailer features over 25 full-sized, fully-functional dock equipment demo units. Call 1-877-778-DOCK (3625) to schedule an appointment and we'll drive our solutions straight to your door.



Serco Entrematic
1612 Hutton Dr., Suite 140
Carrollton, TX 75006
800.933.4834
www.sercoentrematic.com

Entrematic reserves the right to change specifications and designs without notice and without incurring obligations. Entrematic products may be the subject of one or more U.S. and/or foreign, issued and/or pending, design and/or utility patents. Entrematic as word and logo are registered trademarks belonging to Entrematic Group AB or other companies controlled by the same organization. All rights reserved.

©Entrematic Group AB 2018. All rights reserved. Printed in USA Form # SCB-DM00-0518