

Serco 2" Steel Sectional Doors

SP2002, SP2012, SE2022, SP2402,
SP2412, SE2422, SP2502, SP2512



Serco SP2402



Serco 2" ribbed panel steel sectional doors are versatile industry workhorses. These open-back commercial steel doors are available in a variety of steel gauges and feature tongue and groove construction with a bottom weather seal to guard against the elements. These doors can be factory- or field-modified with CFC-free polystyrene insulation to fit the needed application.



CONSTRUCTION

Serco SP2002/SP2012/SE2022

Extra Heavy-duty, 20-gauge steel

Serco SP2402/SP2412/SE2422

Heavy-duty, 24-gauge steel

Serco SP2502/SP2512

Medium-duty, nominal 24-gauge steel

SINGLE-LAYER Steel

Available in SP2002/SP2402/SP2502



R-Value 6.64

DOUBLE-LAYER Steel + Insulation

Available in SP2012/SP2412/SP2512



R-Value 6.64

TRIPLE-LAYER Steel + Insulation + Steel Backer

Available in SE2022/SE2422



Track: All doors are available with both 2" or 3" track in Standard Lift, High Lift, Vertical Lift, Low Headroom, and Follow the Roof Pitch. Custom track configurations are also available. For drawings and more information, please visit www.sercoentrematic.com.

Springs: Torsion springs are oil tempered, helical wound and custom computed for each door for a minimum 10,000 cycle life. Optional springs are available up to 100,000 cycle life.

Hardware: Hardware includes minimum 14-gauge galvanized steel hinges and 13-gauge galvanized steel track brackets. All rollers have minimum 10-ball bearings.

SPECIFICATIONS

	Extra Heavy-duty			Heavy-duty			Medium-duty	
	Serco SP2002	Serco SP2012	Serco SE2022	Serco SP2402	Serco SP2412	Serco SE2422	Serco SP2502	Serco SP2512
STEEL THICKNESS (Front/Back)	20-ga	20-ga	20-ga / 25-ga	24-ga	24-ga	24-ga / 25-ga	Nominal 24-ga	Nominal 24-ga
PANEL DESIGN	Deep Ribbed	Deep Ribbed	Deep Ribbed	Deep Ribbed	Deep Ribbed	Deep Ribbed	Deep Ribbed	Deep Ribbed
STEEL EMBOSMENT	Smooth	Smooth	Smooth	Smooth	Smooth	Smooth	Smooth	Smooth
DOOR THICKNESS	2" (5.1cm)	2" (5.1cm)	2" (5.1cm)	2" (5.1cm)	2" (5.1cm)	2" (5.1cm)	2" (5.1cm)	2" (5.1cm)
CONSTRUCTION LAYERS	Single	Double	Triple	Single	Double	Triple	Single	Double
INSULATION¹		Polystyrene	Polystyrene		Polystyrene	Polystyrene		Polystyrene
R-VALUE²		6.4	6.4		6.4	6.4		6.4
MINIMUM WIDTH	6'	6'	6'	6'	6'	6'	6'	6'
MAXIMUM WIDTH	26' 2"	26' 2"	26' 2"	30' 2"	30' 2"	30' 2"	20' 2"	20' 2"
MINIMUM HEIGHT	7'	7'	7'	7'	7'	7'	7'	7'
MAXIMUM HEIGHT	24' 1"	24' 1"	24' 1"	24' 1"	24' 1"	24' 1"	14' 1"	14' 1"
WIND LOAD³ AVAILABLE	•	•	•	•	•	•	•	•
PAINT FINISH WARRANTY⁴	10 Years	10 Years	10 Years	10 Years	10 Years	10 Years	10 Years	10 Years
WORKMANSHIP/HARDWARE WARRANTY⁴	1 Year	1 Year	1 Year	1 Year	1 Year	1 Year	1 Year	1 Year

¹ Insulation has passed self-ignition, flamespread and smoke developed index fire testing.

² Calculated door section R-value is in accordance with DASMA TDS-163.

³ It is your responsibility to make sure your garage door meets local building codes.

⁴ For complete warranty details, visit sercoentrematic.com or contact your local Serco dealer.

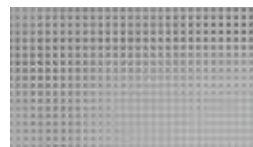
PANEL OPTIONS



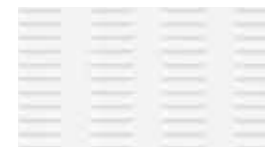
RIBBED PANEL



ALUMINUM FULL VIEW*



PERFORATED ALUMINUM†
0.312" square perforations on 1/2" centers



LOUVERED ALUMINUM*
7 columns of (12) 3"x3/4" vents on a 4'x24" panel

†Mill finish only. Custom powder coat available Summer 2015

*Available in all Aluminum color options

STEEL COLORS

Serco steel doors are pre-painted for custom colors, exterior latex paint must be used. Visit sercoentrematic.com for instructions on painting. Actual paint colors may vary from samples shown.



COMMERCIAL WHITE



COMMERCIAL BROWN
SP2402/SP2412/SE2422



COMMERCIAL BLACK
SP2402/SP2412/SE2422

ALUMINUM COLORS

Actual color may vary from sample shown.



CLEAR ANODIZED



ANODIZED DARK BRONZE



ANODIZED BLACK



WHITE POWDER COAT

WINDOW OPTIONS



24" X 12" SINGLE PLEXIGLAS®
24" X 12" INSULATED PLEXIGLAS®



24" X 6" DSB or PLEXIGLAS®

Available with either a black or white frame.

ENTREMATIC

Entrematic
165 Carriage Court
Winston-Salem, NC 27105
800.933.4834
www.sercoentrematic.com



Entrematic reserves the right to change specifications and designs without notice and without incurring obligations. Entrematic products may be the subject of one or more U.S. and/or foreign, issued and/or pending, design and/or utility patents. Serco as word and logo are registered trademarks belonging to Entrematic Group AB or other companies controlled by the same organization. All rights reserved.

©Entrematic Group AB 2015. All rights reserved. Printed in USA Form # SSS-2SSD-1015