



BY TKO® DOCK DOORS

PRODUCT SPECIFICATIONS

INDUSTRIAL DOCK DOOR

Design Highlights

- 4" Thick closed cell xEPS foam panel provides R-23 for superior thermal protection
- 48" high panels reduce the number of panel joints by half when compared to industry standard 24" high panels. Fewer panel joints ensure a better sealing door.
- Easy to Clean FRP panel interior skin and UV stabilized exterior painted aluminum
- Heavy-duty 12 gauge galvanized steel track with full opening height polymer thermal break with energy reflective foil fabric backing.
- Dual Compression side seals mounted to panel and removed from impact zone when door is open. Direct contrast to traditional doors which leave their seals exposed to passing loads during loading and unloading of the trailer.
- Dual overlapping foam and vinyl header seals provide superior seal when compared with standard single seal found on conventional doors.
- Foam filled compression loop seals on bottom of door eliminate air infiltration at the floor.
- Heavy-Duty fixed roller plunger in lieu of maintenance prone roller wheels found on conventional doors.
- 15,000 cycle torsion springs standard (Higher cycle springs and counterweight is available)

Door Size

Opening Width _____ in / cm

Opening Height _____ in / cm

Options

Track

C-Channel Spring Pad Mount

Panel

2" Thick Panel

Slide Lock Left Right Dual

Dual Pane Window

3" Bottom Brush Seal

Counterbalance

Cycle Springs: 25k 50k 75k 100k

Counterweight System

Solid Shaft Upgrade

Operator

Manual Chain Hoist

Auxiliary Trolley Chain Hoist

Model J Operator VAC _____ Phase _____

Model H Operator VAC _____ Phase _____

Primary Safety Features

Monitored Photo Eyes

Monitored Safety Edge

Secondary Safety Features

Electric 2-wire Safety Edge

Electric 4-wire fail safe Safety Edge

Pneumatic Safety Edge

Pull Cord Quantity _____

Car Wash Operator Upgrade

NEMA 4 Controls Upgrade

Project Information

Job Name _____

Address _____

General Contractor _____

Distributor _____

Model _____ Quantity _____ Voltage/Phase _____

Certified For Construction

By _____

Company _____

Address _____

Date _____



VERTICOOL BY TKO® DOCK DOORS **PRODUCT SPECIFICATIONS** **INDUSTRIAL DOCK DOOR**

DOOR OPENING DIMENSIONS & CLEARANCES

Opening Width (To Nearest 1/4") _____

Opening Height (To Nearest 1") _____

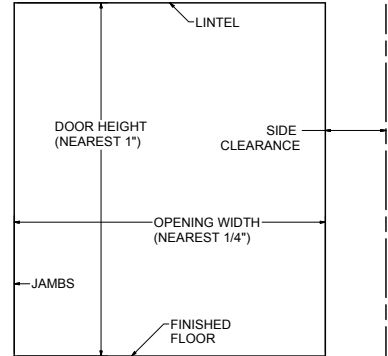
Side Clearance Right _____

Side Clearance Left _____

Jamb Substrate/Mounting Surface Material: Specify Block, Masonry, Wood, Steel, Insulated Panel, Other _____

Upper _____

Lower _____



OVERHEAD OBSTRUCTIONS & CLEARANCES

Zone A Obs. Type: Conduit, Beam, Other _____

Dimension A1 _____

Dimension A2 _____

Zone B Obs. Type: Ceiling, Truss, Other _____

Dimension B1 _____

Dimension B2 _____

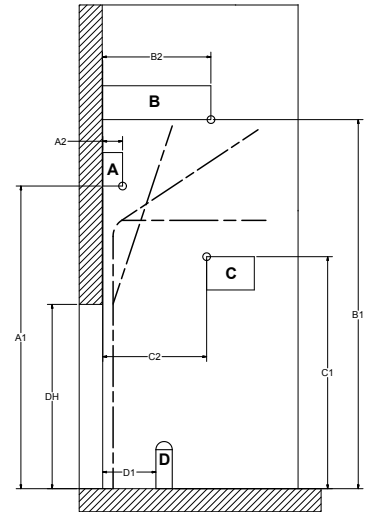
Zone C Obs. Type: Racking, Sprinkler, Other _____

Dimension C1 _____

Dimension C2 _____

Zone D Obs. Type: Bollard, Other _____

Dimension D1 _____



1. **General:** VertiCool's patented design provides all the functionality of a slab door.
2. **Track:** Heavy-duty 12 gauge galvanized steel track with full opening height polymer thermal break with energy reflective foil fabric backing.
3. **Panel:** 48" high panels reduce the number of panel joints by 1/2 when compared to industry standard 24" high panels. 4" Thick closed cell xEPS foam panel provides R-23 for superior thermal protection. Fewer panel joints ensure a better sealing door. Easy to Clean FRP panel interior skin and UV stabilized exterior painted aluminum
4. **Guide Pins:** Heavy-duty fixed plungers eliminate high maintenance roller wheels.
5. **Seals:** Dual Compression side seals mounted to panel and removed from impact zone when door is open. Direct contrast to traditional doors which leave their seals exposed to passing loads during loading and unloading of the trailer. Dual overlapping foam and vinyl header seals provide superior seal when compared with standard single seal found on conventional doors. Foam filled compression loop seals on bottom of door eliminate air infiltration at the floor.
6. **Counterbalance System:** Torsion spring counterbalance system rated for 15,000-cycle minimum. Higher cycle torsion springs or counterweight system available.
7. **Lock:** One TKO lock for security or knockout provisions.
8. **Handles:** Black grip door lift handle, two per door standard.
9. **Warranty:** TKO Dock Doors, a business unit of 4Front Engineered Solutions, Inc., warrants that every door, its hardware and fittings will be free of defects in workmanship and material. Should any defect in workmanship or material appear within ONE (1) year of shipment, TKO shall, upon notification, correct such non-conformity at its option, by repairing or replacing any defective part or parts. **This limited warranty does not include** normal wear, modifications, and damage beyond the manufacturer's control, replacement labor or implied cycle life of counter balance systems (cables, spring assembly, drums, shaft cones, shaft bearings or center bearing bracket).